

# Manage Edge AI Devices In just a few clicks

## Allxon Remote Device Management Solutions

Distributed by:



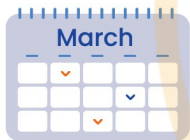
### Traditional



Remediate on Site



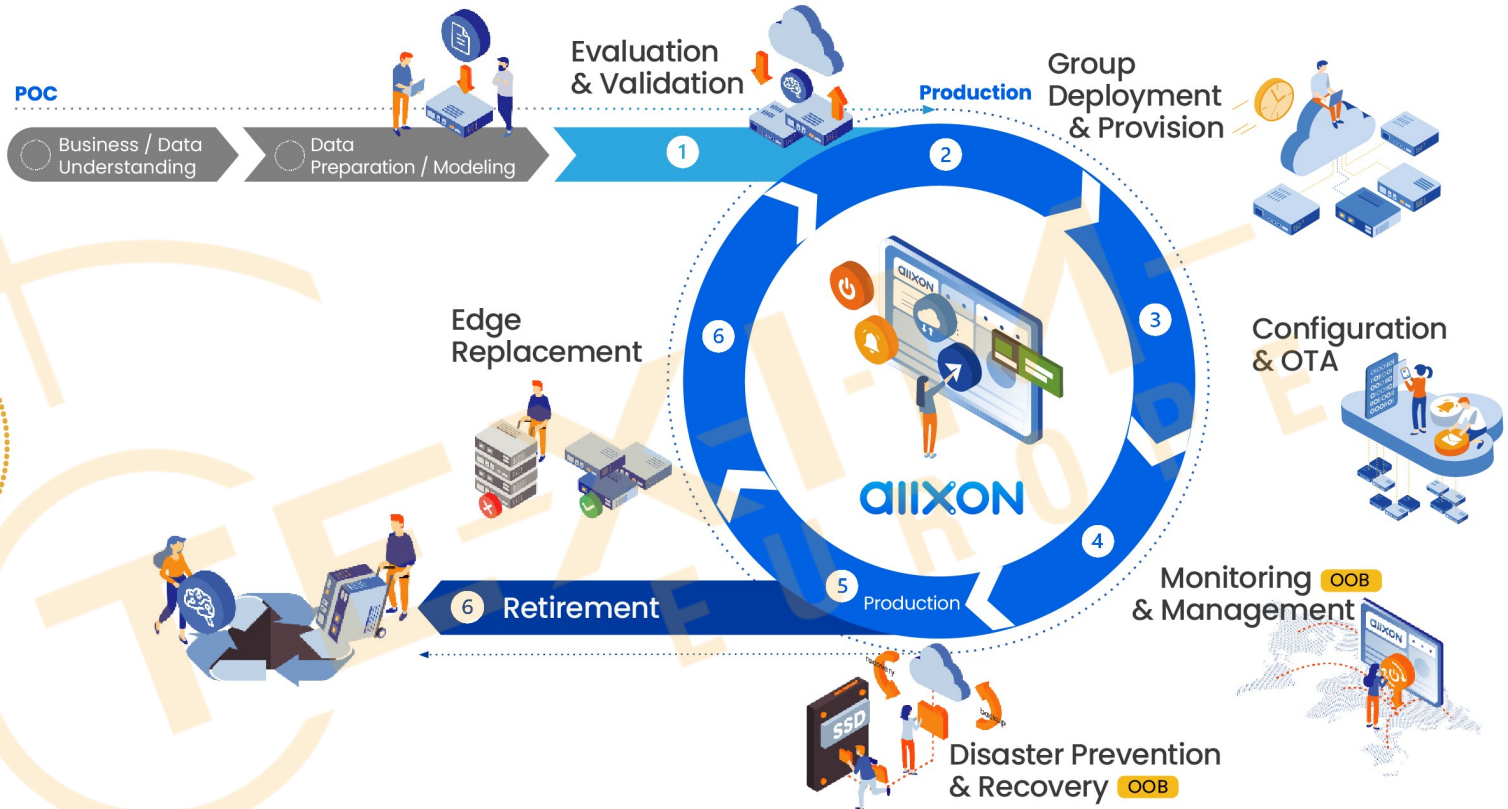
Long Traffic Hours



Schedule a Visit

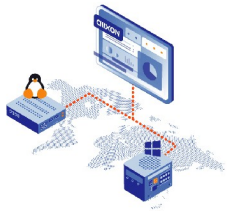
Remediate On Site

### Now, Allxon Offers you a Better Solution !



Remediate Remotely

## Key Benefits



# 1

### Portal for all Operation System

supporting Windows and Linux, with no additional compatibility issues



# ~30%

### Maintenance Cost Reduction

through instant incident rescue and application reflash by group

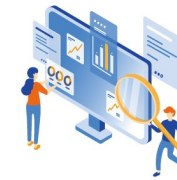


# 24/7

### Safe and Reliable Cloud-based service

with fully secure end-to-end encryption from the cloud to the edge

## True Eco-System



Hardware

Software

Deployment

Support

IHV

ISV

Service Provider  
(SI/MSP)

# aiixon

## Allxon unique functionalities for NVIDIA® Jetson™ Edge AI systems



OOB Power Cycling & Scheduling



Image-Based OTA for BSP



Cyber Security at the Edge



Customized Edge Device Mgmt.

## Out-Of-Band Technology

The Allxon Out-Of-Band (OOB) technology is a sum of Hardware Allxon swiftDR OOB Enabler, Cloud-based Technologies and Solutions utilized to build optimized Edge AI device management.

Cloud side



Performance

# aiixon

Security

Manageability

Edge side



In-Band Agent

Allxon swiftDR OOB Enabler

Designed for Edge AI management needs

# aiixon



For more information on how Allxon can assist your business, contact us at

[services@allxon.com](mailto:services@allxon.com)

<https://allxon.com>



Follow us on LinkedIn for more use cases, news, and industry insights!



## **Disclaimer**

ALL PRODUCTS, PRODUCT SPECIFICATIONS AND DATA ARE SUBJECT TO CHANGE WITHOUT NOTICE TO IMPROVE RELIABILITY, FUNCTION OR DESIGN OR OTHERWISE.

Texim Europe B.V. its affiliates, agents, and employees, and all persons acting on its or their behalf (collectively, "Texim"), disclaim any and all liability for any errors, inaccuracies or incompleteness contained in any datasheet or in any other disclosure relating to any product.

Texim makes no warranty, representation or guarantee regarding the suitability of the products for any particular purpose or the continuing production of any product.

It is the customer's responsibility to validate that a particular product with the properties described in the product specification is suitable for use in a particular application.

Parameters provided in datasheets and / or specifications may vary in different applications and performance may vary over time.

All operating parameters, including typical parameters, must be validated for each customer application by the customer's technical experts.

Please contact us if you have any questions about the contents of the datasheet.

This may not be the latest version of the datasheet. Please check with us if a later version is available.



## Headquarters & Warehouse

Elektrostraat 17  
 NL-7483 PG Haaksbergen  
 The Netherlands

T: +31 (0)53 573 33 33  
 E: info@texim-europe.com  
 Homepage: www.texim-europe.com



## The Netherlands

Elektrostraat 17  
 NL-7483 PG Haaksbergen

T: +31 (0)53 573 33 33  
 E: nl@texim-europe.com



## Belgium

Zuiderlaan 14, box 10  
 B-1731 Zellik

T: +32 (0)2 462 01 00  
 E: belgium@texim-europe.com



## UK & Ireland

St Mary's House, Church Lane  
 Carlton Le Moorland  
 Lincoln LN5 9HS

T: +44 (0)1522 789 555  
 E: uk@texim-europe.com



## Germany - North

Bahnhofstrasse 92  
 D-25451 Quickborn

T: +49 (0)4106 627 07-0  
 E: germany@texim-europe.com



## Germany - South

Martin-Kollar-Strasse 9  
 D-81829 München

T: +49 (0)89 436 086-0  
 E: muenchen@texim-europe.com



## Austria

Warwitzstrasse 9  
 A-5020 Salzburg

T: +43 (0)662 216 026  
 E: austria@texim-europe.com



## Nordic

Søndre Jagtvej 12  
 DK-2970 Hørsholm

T: +45 88 20 26 30  
 E: nordic@texim-europe.com



## Italy

Martin-Kollar-Strasse 9  
 D-81829 München

T: +49 (0)89 436 086-0  
 E: italy@texim-europe.com